



GAT MONTHLY MEMBERSHIP PROGRESS REPORT

Results as of: 6/30/2023

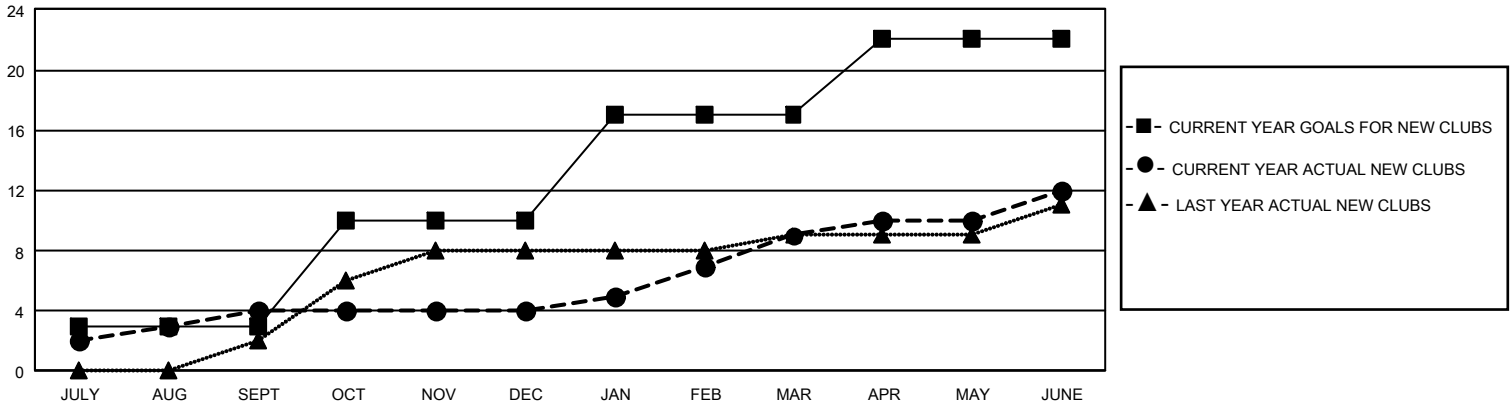
GMT Constitutional Area 2, Group B

REPORT DOES NOT INCLUDE CLUBS IN UNDISTRICTED AREAS.

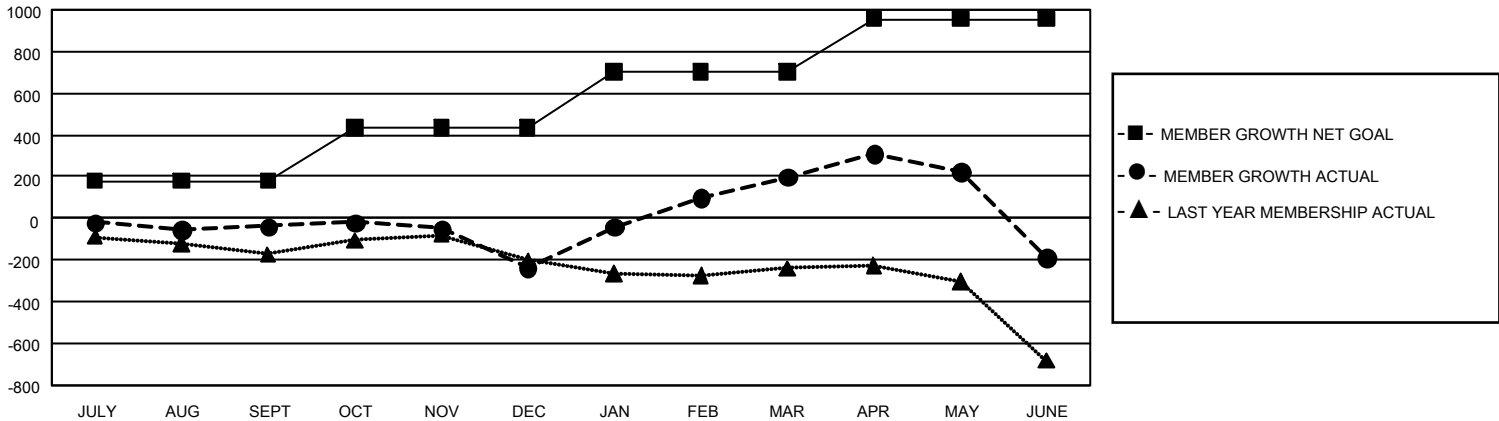
Clubs			
RESULTS FOR 2022-2023			
QUARTER	NEW CLUB GOAL	NEW CLUBS	DROPPED CLUBS
JULY/AUG/SEPT	9	4	4
OCT/NOV/DEC	21	0	6
JAN/FEB/MAR	21	5	2
APR/MAY/JUNE	15	3	12

Members			
RESULTS FOR 2022-2023			
QUARTER	MEMBER GROWTH NET GOAL	MEMBER GROWTH ACTUAL	DROPPED MEMBERS ACTUAL (including transfers)
JULY/AUG/SEPT	180	424	403
OCT/NOV/DEC	255	610	744
JAN/FEB/MAR	270	909	406
APR/MAY/JUNE	250	791	1,096

GOALS AND ACTUAL NEW CLUBS CUMULATIVE



GOALS AND ACTUAL MEMBERS CUMULATIVE



DROPPED CLUBS: 24	489 CLUBS OF 704 ADDED 1 OR MORE NEW MEMBERS	<u>GENDER DISTRIBUTION</u>	
<u>DROPPED MEMBERS</u>		MALE	9,847 (62.47%)
DECEASED	307	FEMALE	5,916 (37.53%)
CLUB CANCELLED	64	NON BINARY	0 (0.00%)
OTHER	2,278	PREFER NOT TO ANSWER	1 (0.01%)
TOTAL	2,649	TOTAL FAMILY UNIT MEMBERS	2,932
	CLICK HERE FOR CUMULATIVE MEMBERSHIP DATA	FAMILY MEMBERS PAYING HALF DUES	1,515